

A **THE** NIGHT
MUSIC

JUNE 8-JULY 2, 2017

f t i
#t3alnm

*Book by Hugh Wheeler
Music and Lyrics by Stephen Sondheim
Suggested by a film by Ingmar Bergman
Directed by Marianne Galloway*




THEATRE 3
DALLAS

theatre3dallas.com

□ A LETTER FROM OUR NEW ARTISTIC DIRECTOR



Quick! Think of one of your favorite experiences at the theatre. Don't take too long. What comes to mind? Was it the entire evening? Or a singular moment never to be recreated again? How old were you? One of mine was during a performance I attended of *A Streetcar Named Desire*. Towards the end of the play Stanley forces himself upon Blanche. The actor playing Stanley grabbed Blanche and threw her on the bed. The momentum caused her tiara, a relic of a better time, to fly from her head. It was an unrehearsed accident.

The actor playing Blanche reached for it in vain as it flew to the ground. Losing that tiara was far more terrifying to her than facing Stanley's advances. An accidental metaphor. It was thrilling and completely heartbreaking. The actor was so completely dropped-in to her character that she reacted with lightning speed as Blanche Dubois. A singular moment never to be recreated again. I believe that is why we go to the theatre. We are in search of the next singular moment, the next fantastic evening that lives in us for years to come. It could happen today! If this is your first time in the theatre, a singular moment could be lurking behind a curtain or hiding in a blackout and it will hook you for the rest of your life. Later, I had the great fortune of marrying the actor who played Blanche.

I am thrilled to be Theatre Three's new Artistic Director. We are participants in each other's lives now. Look around the audience. You are part of their lives, sharing a common experience that is unique and will never be repeated. That is the privilege live performance affords. Working together with the fantastic T3 staff and the profoundly talented artists of Dallas, I look forward to the coming years. It ain't gonna to be easy, on so many levels. But, I pledge to keep T3 a place where you can just get lost for a while and to always challenge the ways you see the world. Hopefully, the next time I ask you about your favorite experiences in the theatre they will have been at T3. Now, go invite someone to the theatre that's never attended.

Jeffrey Schmidt
Artistic Director



PSYCHO BEACH PARTY

by Charles Busch
June 23 - July 10, 2016



LAUGH

by Beth Henley
January 5 - 29, 2017



THE NOVELIST

by Theresa Rebeck
August 4 - 28, 2016



PASSING STRANGE

by Stew and Heidi Rodewald
March 2 - 26, 2017



THE WEDDING SINGER

by Matt Sklar, Tim Herlihy
& Chad Beguelin
September 22 - October 16, 2016



SUSAN AND GOD

by Rachel Crothers
April 20 - May 14, 2017



DAY LIGHT

by Bruce R. Coleman
November 17 - December 11, 2016



A LITTLE NIGHT MUSIC

by Stephen Sondheim and Hugh Wheeler
June 8 - July 2, 2017

A LITTLE NIGHT MUSIC IS MADE POSSIBLE BY...

Theatre Three is supported by its Board of Directors, by subscribers, by funds from the City of Dallas Office of Cultural Affairs, The Texas Commission on the Arts, TACA, and Dallas Tourism Public Improvement District. This project is supported in part by an award from the National Endowment for the Arts. Dr. Delphinium is Theatre Three's florist. A major contribution from the estate of Marlene Webb, a longtime subscriber, has established the Theatre Three Endowment Fund in support of the building and its equipment.



CELEBRATING 50 YEARS
of TRANSFORMING
LIVES THROUGH THE ARTS



Office of Cultural Affairs
CITY OF DALLAS



National
New Play
Network



Texas
Commission
on the Arts



T3 PEOPLE

BOARD OF DIRECTORS

CHAIR Scott T. Williams

BOARD MEMBERS

Marion L. Brockette, Jr., Suzanne Burkhead,
Raymond J. Clark, Mike Cluff, Sid Curtis, Laura V.
Estrada, Sally Hansen, David G. Luther, Jr.,
David M. May, Chris Rajczi, Margie J. Reese,
Dana W. Rigg, Elizabeth Rivera

HONORARY BOARD MEMBERS

Virginia Dykes, Gary W. Grubbs,
John & Bonnie Strauss

ADMINISTRATION

ARTISTIC DIRECTOR Jeffrey Schmidt
MANAGING DIRECTOR Merri Brewer
BOOKKEEPER Linda Harris
COMPANY MANAGER Kat Edwards
PUBLICITY, MARKETING & DESIGN
SoloShoe Communications, LLC
CPA Ron King
HOUSEKEEPING Kevin Spurrier

PRODUCTION

TECHNICAL DIRECTOR John Ruegsegger
SCENIC PAINTER David Walsh
APPRENTICE STAFF
Seth Monhollon, Lauren Volz

CUSTOMER SERVICE

BOX OFFICE MANAGER
Sarah Barnes
HOUSE MANAGER
Angelica Rollins
BOX OFFICE AGENTS
Tony Banda, Samantha Grace, Eileen Haefner



Theatre Three has Hearing Assistance devices which may be checked out without charge from the box office. These devices enhance the performance experience for audience members with any degree of hearing limitation. The box office personnel can provide you with the devices either before the show or at intermission. Theatre Three's staff and board are most grateful to donors Carolyn Wickwire and Dennis West, who provided the grant that allows us to offer this enhancement to our patrons.

ON OTHER STAGES

DALLAS THEATER CENTER

MAY 16 – JUN 18 *Inherit the Wind*

HIP POCKET THEATRE

JUN 2 – 25 *Flash Gordon Conquers the Universe*

WATERTOWER THEATRE

JUN 9 – 18 *Native Garden*

LYRIC STAGE

JUN 9 – 18 *Pure Country*

KITCHEN DOG THEATER

JUN 9 – JUL 1 *Br'er Cotton*

CIRCLE THEATRE

JUN 15 – JUL 15 *King O' the Moon*

STAGE WEST

JUN 22 – JUL 23 *Sex With Strangers*

BRICK ROAD THEATRE

JUN 23 – JUL 2 *Cabaret*

DALLAS CHILDREN'S THEATER

JUN 23 – JUL 9 *Mufaro's Beautiful Daughters*



In partnership with the Deaf Action Center we are proud to bring you Deaf Accessible performances! The following performance of *A Little Night Music* will have BEI/RID certified interpreters in place to sign the performance: **Thursday, June 15, 2017.**

For more information and show times of our other interpreted performances please visit www.theatregdallas.com Patrons wishing to access the signed performances are requested to call the box office manager, Sarah Barnes at 214-871-3300 x 116 or contact her via e-mail at sarah.barnes@theatregdallas.com.



A Little Night Music

Music and Lyrics by Stephen Sondheim; Book by Hugh Wheeler

THE NORMA YOUNG ARENA STAGE

ARTISTIC STAFF

DIRECTOR

Marianne Galloway

ASSISTANT DIRECTOR

Micah Lyles

MUSIC DIRECTOR

Scott A. Eckert

LIGHTING DESIGN

Leann Burns

COSTUME DESIGN

Michael A. Robinson

SCENIC DESIGN

Michelle D. Harvey

SOUND ENGINEER

**Kellen Voss/
Danny Bergeron**

MASTER ELECTRICIAN

Nic McMinn

WIG MASTER

Gary James

PRODUCTION STAFF

AEA STAGE MANAGER

Nicolás E. Castañón*

ASST. STAGE MANAGER

Kat Edwards*

PRODUCTION ASSISTANT

Lauren Volz

TECHNICAL DIRECTOR

John Ruegsegger

SCENIC PAINTER

David Walsh

PRODUCTION CREW

Seth Monhollon

Garrett McPherson

SETTING

A Theatre

SPECIAL THANKS

Stolen Shakespeare Guild for the croquet set,
University of North Texas

PLAYBILL DESIGN

SoloShoe Communications, LLC.

FRONT COVER PHOTOGRAPHY

Jeffrey Schmidt

This playbill is a publication of Theatre Three, Inc.
in support of *A Little Night Music* (the seventh and
final show of Theatre Three's 2016-2017 season)
on the Norma Young Arena Stage.

CAST (in alphabetical order)

Regis Allison

CARL-MAGNUS

Christina Castro**

MRS. NORDSTROM

Andrea Cox

MRS. SEGSTROM

Clint Gilbert**

FRID

Lindsay Goldapp

MALLA

Ellie Hertel**

ANNE

Seth Johnson**

BERTRAND

Ashlie Kirkpatrick

CHARLOTTE

Jennifer Kuenzer*

DESIREE ARMFELDT

John Kuether*

FREDRIK

Kelley Lokensgard**

MRS. ANDERSSEN

Russell McCook*

HENRIK

Grace Moore**

FREDRIKA

Samantha Padilla

OSA

Colin Phillips**

MR. LINDQUIST

Jonathan Speegle**

MR. ERLANSON

Wendy Welch*

MADAME ARMFELDT

Jacie Hood Wenzel**

PETRA

BAND

REED 1

Ellen Kaner

REED 2

Clayton Williams

REED 3

Chad Ostermiller

VIOLIN 1

Lucia Neaga

VIOLIN 2/VIOLA

Christine Aeschbacher

CELLO

Jeff Harvick

There will be one 15 minute intermission.

A LITTLE NIGHT MUSIC

Music and Lyrics by Stephen Sondheim

Book by Hugh Wheeler

Orchestrations by Jonathan Tunick

Suggested by a film by Ingmar Bergman

Originally produced and directed on Broadway by Harold Prince

A Little Night Music is presented through special arrangement with
Music Theatre International (MTI). All authorized performance
materials are also supplied by MTI. www.MTIShows.com

Please silence your cell phones and all electronic devices. No
photography or videography is allowed without the consent of
the theater.

* indicates members working under Actors' Equity
Association contracts in this production.

** indicates a performer enrolled in the AEA membership
candidate program.

▣ DIRECTOR'S NOTES

When Jeffrey asked me to direct *A Little Night Music*, I thought, “Did he mean to send this email to someone else? I’d better say ‘yes’ before he realizes.” Directors whose bodies of work tend towards the titans of absurdity generally don’t get asked to direct lush romantic comedies. And Deaf Directors generally don’t get asked to direct musicals. Go figure.

But he did ask, and it wasn’t a mistake, so off to work I went....bionic ears, twisted humor and all. In the process, I rediscovered a core belief held as a college Opera major with a fervent desire to live up to Beethoven’s proof: Music is felt, not heard. That rediscovery brought me to an examination of expectations. We expect a Deaf Director not to direct musicals, and perhaps we expect *A Little Night Music* to be presented a “certain way.”

Expectations can either empower or constrain, and one of the most empowering parts of this experience has been the sense of “What if....?” and “Yes, and....!” that has permeated the process from the very start. It’s a delicate balancing act to honor the past, acknowledge the present, and move forward to the future. We wanted to respect that there are “things that have always been done” while examining whether there’s a valid reason they continue. When we require someone to be something they are not, we stifle potential. But when we empower growth towards a new unknown, we can discover depths and resonance we might never have otherwise known were there.

Going towards the unknown is scary... what if that way lies failure? But when your fears fail you, you learn to rely on what you see and what you feel. When we held auditions, we felt for the heart of each of our cast members, and looked for the truth of storytelling in their eyes. Each and every one of the artists onstage tonight were able to let us in not just through the power of their voices, but through the windows of their beautiful souls. On the backs of this truthful, lion-hearted ensemble of actors, we built a concept honoring the history of this beloved musical: it’s inspiration (Ingmar Bergman’s gorgeous and hilarious 1955 Swedish language film “Smiles of A Summer Night”), the memories so many have of the iconic 1973 Broadway debut, the controversial 1977 film incarnation, and the star-studded revivals here and abroad throughout the last several decades.

We then set the whole thing in a place that has truly seen it all and will see it all again with new eyes long after we have left this mortal coil. A place that simultaneously embraces the greatest of expectations and absolutely no expectations: The Theatre.

We felt what happened. And it was wonderful.

Thank you for joining us in this particular moment on the journey of *A Little Night Music*. May your heart and eyes be open, and, perhaps, your expectations exceeded.

– Marianne Galloway, Director



A Little Night Music

Music and Lyrics by Stephen Sondheim; Book by Hugh Wheeler

About the Playwrights

Hugh Wheeler was a novelist, playwright and screen writer. He wrote more than thirty mystery novels under the pseudonyms Q. Patrick and Patrick Quentin, and four of his novels were transformed into films: “Black Widow,” “Man in the Net,” “The Green-Eyed Monster” and “The Man with Two Wives.” For films he wrote the screenplays for “Travels with My Aunt,” “Something for Everyone,” “A Little Night Music” and “Nijinsky.” His plays include *Big Fish*, *Little Fish* (1961), *Look: We’ve Come Through* (1961) and *We Have Always Lived in the Castle* (1966, adapted from the Shirley Jackson novel), he co-authored with Joseph Stein the book for a new production of the 1919 musical *Irene* (1973), wrote the books for *A Little Night Music* (1973), a new production of *Candide* (1973), *Sweeney Todd, the Demon Barber of Fleet Street* (1979, based on a version of the play

by Christopher Bond), and *Meet Me in St. Louis* (adapted from the 1949 MGM musical), contributed additional material for the musical *Pacific Overtures* (1976), and wrote a new adaptation of the Kurt Weill opera *Silverlake*, which was directed by Harold Prince at the New York Opera. He received Tony and Drama Desk Awards for *A Little Night Music*, *Candide* and *Sweeney Todd*. Prior to his death in 1987, Mr. Wheeler was working on two new musicals, *Bodo* and *Fu Manchu*, and a new adaptation of *The Merry Widow*.

Stephen Sondheim wrote the music and lyrics for *Saturday Night* (1954), *A Funny Thing Happened On The Way To The Forum* (1962), *Anyone Can Whistle* (1964), *Company* (1970), *Follies* (1971), *A Little Night Music* (1973), *The Frogs* (1974), *Pacific Overtures* (1976), *Sweeney Todd* (1979), *Merrily We Roll Along* (1981), *Sunday In The Park With*

George (1984), *Into The Woods* (1987), *Assassins* (1991), *Passion* (1994) and *Road Show* (2008) as well as lyrics for *West Side Story* (1957), *Gypsy* (1959) and *Do I Hear A Waltz?* (1965) and additional lyrics for *Candide* (1973). Anthologies of his work include *Side By Side by Sondheim* (1976), *Marry Me A Little* (1981), *You’re Gonna Love Tomorrow* (1983), *Putting It Together* (1993/99) and *Sondheim On Sondheim* (2010). He composed the scores of the films “Stavisky” (1974) and “Reds” (1981) and songs for “Dick Tracy” (1990) and the television production “Evening Primrose” (1966). His collected lyrics with attendant essays have been published in two volumes: “Finishing the Hat” (2010) and “Look, I Made A Hat” (2011). In 2010, the Broadway theater formerly known as Henry Miller’s Theatre was renamed in his honor.

■ CAST AND CREW BIOGRAPHIES

Artistic Staff Biographies

Leann Burns

LIGHTING DESIGN

Leann Burns received her BA from The University of North Texas and currently works as the Technical Theatre Director at Irving High School. Leann is excited to be designing lights for Theatre Three for the first time! She has designed extensively at Water Tower Theatre in Addison. Some of her most recent work includes *Silent Sky*, *One Man, Two Guvnors*, *The Grapes of Wrath*, *Spring Awakening*, *The Lieutenant of Inishmore*, and many others. Previous to her design work, Leann was the Master Electrician for WTT from 2007–10. Leann also worked at Merry-Go-Round Playhouse in Auburn, NY where she designed for *Always*, *Patsy Cline* and worked as an Electrician and Master Electrician from 2005–07.

Scott A. Eckert

MUSIC DIRECTOR

returns to Theatre Three having provided music direction for *The Hot Mikado*. Other music direction credits include *Hedwig And The Angry*

Inch, *The Boy From Oz*, *The Producers*, *Dirty Rotten Scoundrels*, *Next To Normal* (Uptown Players), *Titanic*, *Jane Eyre*, *The Human Comedy* (Lyric Stage), *Company*, *Smokey Joe's Café*, *PARADE*, (WaterTower Theatre), *Nine*, *Big River*, *How To Succeed...* (Mainstage) *The Best Little Whorehouse In Texas*, *Little Women* (CTD), *West Side Story*, *Nine To Five*, *Brigadoon* (Garland Summer Musicals), and *Fiddler On The Roof* (Associate Conductor, National Tour). He has been recognized by the Dallas Theater League and The DFW Theater Critics Forum for his work both the music director and playwright.

Michelle Harvey

SCENIC DESIGN

(USA 829, MFA) is the resident scenic design faculty member for The University of Texas at Arlington's Department of Theatre Arts and Maverick Theatre Company. She teaches classes in design, scenic painting and properties and oversees these areas for departmental productions. Michelle regularly designs for the Maverick Theatre Company and the Turtle Creek Chorale, and has

designed for Theatre Three (*Memphis, Picnic*), Dallas Children's Theatre (*The BFG*, *Seussical*), Theatre Arlington (*Working*), Uptown Players (*Soho Cinders*, *Aida*, *Ragtime*, *Sweeney Todd*, *Titanic*), Mainstage Irving – Las Colinas (*The Matchmaker*, *Curtains*, *The Musical Comedy Murders of 1940*) and The Spectacular Senior Follies (since 2015), among others.

Micah Lyles

ASSISTANT DIRECTOR

is celebrating his 15th year of staging theatre with Marianne Galloway and his first show at Theatre Three. Since co-founding Risk Theater Initiative in 2002 with Galloway, Micah has directed *The Zoo Story*, served as assistant director on *Waiting for Godot*, *Rosencrantz and Guildenstern are Dead*, and *Angels in America: Millennium Approaches*, and co-directed *Antarctica* for the Out of the Loop Festival.

Michael A. Robinson

COSTUME DESIGN

With his team at the Dallas Costume Shoppe, Michael has designed and provided costumes for countless area productions over the years, including: *The Drowsy Chaperone*, *Cats*, *Evita*,

Addams Family, *Bonnie and Clyde*, *Crazy For You*, *Spring Awakening*, *Shrek*, *Nine*, *The Full Monty*, and the critically acclaimed *Avenue Q* for T3. Area theaters Michael has costumed for include: Theatre Three, Stage West, Uptown Theatre, Echo Theatre, Rover Drama Werks, Second Thought Theatre, Garland Summer Musicals, Contemporary Theatre of Dallas, Teatro Dallas, WaterTower Theater, and Lyric Stage. Michael's costumes for Mozart's *Così fan Tutti* were seen at the famous Goldini Theatre in Venice, Italy, and were also featured in the BBC documentary of *Bonnie and Clyde*. He recently costumed the New York premier of *As We Lie Still*. Michael is very happy to be back working with his friends at Theatre Three.

Marianne Galloway

DIRECTOR

is thrilled to be back at Theatre Three after appearing as Janis Joplin and Brenda Lee in T3's production of *Beehive*, and Susan in the regional premiere of {title of show}. She recently appeared Off-Broadway as Elizabeth in the NYC premiere of *Lone Star/Laundry and Bourbon*, and as the Woman in Red in J.J. Abrams' miniseries

of Stephen King's '11.22.63' (with James Franco). Local acting credits include *Angels in America* (Uptown Players), *Children of a Lesser God*, *Rabbit Hole* (Contemporary Theater of Dallas), *Lovers and Executioners* (Circle Theater), and *Silent Sky* (Watertower Theater). Local directing credits include *Much Ado About Nothing* (Shakespeare Dallas), *The Receptionist* (Watertower), *Lawrence and Holloman* (Second Thought Theatre), *Waiting for Godot*, *Slaughterhouse 5*, *Rosencrantz and Guildenstern are Dead*, *Pinkalicious*, *Hank the Cowdog*, and *Stinky Cheese Man* (Risk Theater Initiative). Regional directing credits include Pasadena Playhouse, DeafWest, and New York's Cherry Lane Theater. She will be directing the world premiere of Sherry Jo Ward's *Stiff* (an autobiographical one-woman comedy about living with Stiff Person Syndrome) at this summer's Festival of Independent Theaters, as well as developing the workshop production of Jessica Cavanaugh's *Self-Injurious Behavior* for Theatre Three. Awards/Nominations: multiple DFW Theater Critics Forum, Column, Dallas Theatre League,

and Dallas Observer Reader's Choice Awards. Affiliations: Risk Theater Initiative (Founder/Artistic Director), Stage Directors and Choreographers Society, Lincoln Center Directors Lab, Directors Lab West, Gideon's Feet (Board Member, www.gideonsfeet.org). Represented by Core Talent.

Cast Biographies



Regis Allison

CARL-MAGNUS

most recently performed in The Pocket Sandwich Theatre's production of Scott Eckert's new musical *Death The Musical II: Death Takes a Harmony*. Prior productions include *The Secret Garden* (Archibald), *Into The Woods* (Prince Charming / Wolf), *Aida* (Zoser), *How To Succeed...* (Finch), *Joseph and the Amazing Technicolor Dreamcoat* (Joseph), *Big River* (Tom Sawyer) and *Tintypes* (Charlie). Regis has had the pleasure of directing

■ BIOGRAPHIES CONTINUED

several productions over the years for Uptown Players, Pocket Sandwich Theatre, MainStage ILC and Garland Civic Theatre as well as working with the Garland Children on Stage program for several years. ILYRrrrr.



Cristina María Castro

MRS. NORDSTROM is thrilled to be making her Theatre 3 debut! A sought-after performer in both musical theatre and opera, her most recent performances include *West Side Story* and *Jesus Christ Superstar* with Casa Mañana and *Norma* with The Dallas Opera. A lover of new music, she has performed several new compositions in Frontiers during the past four seasons with the Fort Worth Opera Festival. Some of her other favorite performances include Maria in *West Side Story*, Despina in *Così fan tutte*, and Rosa Bud in *The Mystery of Edwin Drood*. Having grown up in Texas but still very much in touch with her Puerto Rican roots,

follow Cristina María's TexaRican adventures both on and off stage @cmcsoprano.



Andrea Cox

MRS. SEGSTROM is thrilled to be making her Theater Three debut! She received her Master of Music in vocal performance from Southern Methodist University. Musical theater roles include Maria del Castillo with Echo Theater, Miss Dorothy in *Thoroughly Modern Millie* with Garland Summer Musicals, and ensemble roles in *Annie Get Your Gun* and *South Pacific* with Lyric Stage. Operatic roles include Guadalupe in *La Perichole*, Laurie in *The Tender Land*, Tamiri in *Il Re Pastore*, Sister Geneveive in *Suor Angelica*, and Laetitia in *The Old Maid and the Thief*. Andrea has served as Soprano Soloist at East Dallas Christian Church for 10 years. She has voice studios at the Acting Studio Grapevine, and Keller and Grapevine High Schools.



Clint Gilbert

FRID

is a native of Carrollton, TX with a Bachelor's in Music Education from Southern Nazarene University and a Master's in Vocal Performance from the University of Oklahoma. This is his premier performance on the Theatre 3 stage. Some of his favorite roles include White Dude in Uptown Players' *Toxic Avenger*, Monty in GLCT's *Violet*, William in Onstage's *How the Other Half Loves*, and Frodo in Circle Theatre's/Theatre Too's *Fellowship!*. He would like to thank his family, his colleagues, his Nicole, and his awesome God for all the support, joy, and purpose that they have brought him through his artistic pursuits.



Lindsay Goldapp

MALLA

has been performing and teaching comedy for over 15 years. She's a graduate of Texas A&M-Commerce with a degree in Acting/Directing and is a graduate of The Second City Improv Conservatory. Lindsay spent several years performing, writing, and teaching improv and sketch comedy in Chicago before moving to Dallas in 2012. She has appeared in commercials for Capital One and Crown Royal as well as several web series' and short films. Lindsay has also performed in Chicago Sketchfest, East Texas Comedy Festival, and Dallas Comedy Festival. She teaches children's improv at Dallas Academy of Music and Performance Arts and directs children's productions for North Texas Performing Arts. Lindsay is busting-at-the-seams thrilled to be appearing for the first time at Theatre 3.



Ellie Hertel

ANNE

is thrilled to be making her Theatre Three debut! Favorite credits include Julie in *New Moon* at Lyric Stage, Shy in *The Best Little Whorehouse in Texas* with Theatre TCU, and Sandra in *Big Fish* at Casa Mañana. TCU MT. Many thanks to Marianne, Scott, Micah, and our brilliant cast and crew. So much love, especially to Mom, Dad, and Kiki. For Lizzie.



Seth Johnson

BERTRAND

This is Seth's first show at Theatre Three. He is an Equity Membership Candidate, recently graduating with honors from Texas A&M University with a BA in Theatre.

He performed in numerous shows at A&M including *Educating Rita*, *Machinal*, *Blithe Spirit*, and *Tartuffe*. His directing credits include *Say You Love Satan* (Uptown Players), *Parched* (Stage West), *Neighborhood 3: Requisition of Doom* (This is Water), *She Kills Monsters*, *The Children's Hour*, *Dog Sees God: Confessions of a Teenage Blockhead* (Flexible Grey Theatre Company), and Asst. Directing *The Pillowman* (Texas A&M). His Stage Management credits include *Tomas and the Library Lady* (Dallas Children's Theatre), *Stupid F*cking Bird* (Stage West), Uptown Players 2016 Pride Festival, Asst. Stage Managing *Angels in America: Millennium Approaches, It's Only A Play, Catch Me if You Can, The Boy from Oz*, and *Art and Science* (Uptown Players). He would like to give God the honor and glory, and thank his family for all their love and support.



Ashlie Kirkpatrick

CHARLOTTE

Ashlie is excited to return to Theatre Three with *ALNM*. Some of her favorite roles to perform include Maria/*Lend Me a Tenor* (Column Award Winner), Miss Adelaide/*Guys and Dolls*, Emma Goldman/*Assassins* (Column Award Winner), Baker's Wife/*Into the Woods*, and Dolly Levi/*Hello Dolly*. Ashlie would like to thank the cast, crew, and creative team for their unending efforts toward a beautiful show, Jon for his incredible support, and Corbin for always being her #1 fan.



Jennifer Kuenzer

DESIREE ARMFELDT

was in Theatre Three's 2016-17 season opener, *The Novelist*, and is over the moon to be returning for

A Little Night Music, in what has long been a dream role of hers. She had previously appeared at Theatre Three in *The Full Monty* and *Frozen*. She's worked with many companies in Dallas/Fort Worth including Brick Road Theatre, WaterTower Theatre, Circle Theatre, Second Thought Theatre, RISK Theatre Initiative, Lyric Stage, and Contemporary Theatre of Dallas. She has also been seen in the webseries "Left Over" and recently shot her first feature, the local independent film "Stuck." Jennifer sends thanks and love to her brilliant and supportive (and incredibly handsome) husband Jim, their six (!!!!!) kids, and her ever encouraging parents.



John Kuether

FREDRIK

has a long association with *The Phantom of the Opera*, including two years with the Basel, Switzerland production, where he both performed and served as Resident Director. He spent ten years with the Broadway production of *Phantom*,

performed in about fifty cities on the national tour, and most recently he was invited to be a part of the original cast in the new Hamburg, Germany production. John has sung with the opera companies of Santa Fe, Houston, Seattle, and Philadelphia, and was chosen by Leonard Bernstein to perform the role of Doc in his *A Quiet Place* with the Vienna State Opera. His favorite roles include Mozart's Figaro and Leporello, Don Magnifico in Rossini's *La Cenerentola*, and the four villains in Offenbach's *Tales of Hoffmann*. He has performed Cervantes/Don Quixote in *Man of La Mancha* with the Skylight Opera Theatre in Milwaukee, and played the title role in staged versions of the Schumann/Lord Byron Manfred with both the Seattle Symphony and the American Symphony Orchestra in Avery Fischer Hall in New York. John can be heard on recordings of Bernstein's *A Quiet Place* and Philip Glass's *La Belle et la Bête*.



Kelley Lokensgard

MRS. ANDERSEN

recently moved to the DFW area to begin her graduate degree in vocal studies at the University of North Texas. There, she studies with the Grammy award-winning soprano Molly Fillmore, and has enjoyed the opportunity to perform as Mrs. Andersen in *A Little Night Music*, Soeur Mathilde in *Dialogues of the Carmelites*, and study Marcellina in *Le nozze di Figaro* all at UNT this year. She previously trained in Decorah, Iowa at Luther College, and in Graz, Austria with the American Institute of Musical Studies. This upcoming year, she will be performing regularly with the UNT Broadway Singers around the DFW area, and looks forward to exploring what the Dallas arts scene has to offer professionally.



Russell McCook

HENRIK

is thrilled to return to his home state of Texas for another weekend in the country! Recent credits include *Who Are You? the Musical* (WAY Productions NYC), *Big Fish*, *A Little Night Music*, *Bernice Bobs Her Hair* (Lyric Theatre OK), *My Fair Lady*, *Les Miserables* (Muny), *Little Women*, *Almost Maine* (Southern Colorado Rep). Russell is an alum of Oklahoma City University and a proud member of Actor's Equity Association.
@russjamesmccook



Grace Moore

FREDRIKA

is thrilled to make her Theatre Three debut! Her favorite local credits include *The Secret Garden* (Mary Lennox) at Genesis Children's Theatre, *Fiddler*

on the Roof (Shprintze) at Lyric Stage, *White Christmas* (Susan Waverly) at Theatre Arlington, and most recently *The Little Mermaid* (Attina) at Casa Manana. Grace joined the national tour of *A Christmas Story, the Musical* during its Dallas run, and her New York credits include the workshop and staged reading of a junior version of *Little Women* (Jo March). Grace is represented by Core Talent.



Samantha Padilla

OSA

Samantha is thrilled to be back on the Theatre Three main stage. She was most recently seen as "Linda" in *The Wedding Singer*, "Grace" in the Theatre Too production of *Tigers Be Still*, and "The Sour Kangaroo" in *Suessical The Musical* at Ohlook Performing Arts. Samantha is very excited to be part of *A Little Night Music* and would like to thank Marianne for this opportunity. She would also like to her family and friends for all of their support and encouragement.



Colin Phillips

MR. LINDQUIST

is ecstatic to be making his Theatre Three debut! Past roles include “Sam the Snowman” in *Rudolph the Red-Nosed Reindeer* with Wishing Star Productions (National Tour), “Clerk/ French Soldier” in *Of Thee I Sing* at Lyric Stage, “Jean Valjean” in *Les Miserables* at Collin College, and “Sweeney Todd” in *Sweeney Todd* at Collin College.



Jonathan Speegle

MR. ERLANSON

is thrilled to be making his Theatre Three debut with this production! Jonathan was most recently seen in *Titanic* with Uptown Players and *Mame* at Lyric Stage. Thanks to the T3 team and this amazing cast and crew! Love to family and friends!



Wendy Welch

MADAME ARMFELDT

is so glad to be on the Theatre Three stage in one of her favorite musicals. She has been seen at Theatre Three in *The Light in the Piazza*, *Caroline, or Change*, *Bloody Bloody Andrew Jackson*, *Assassins*, *Ellegies*. Local and regional sampling: *Sexy Laundry*, *Vanya, Sonia, Masha and Spike*, *The Unmentionables*, *The Matchmaker*, *Death of a Salesman*, *Damn Yankees*, *Follies*, *History Boys*, *Best of Forbidden Broadway*, *Violet, Victor Victoria*, etc. She has directed a number of musicals locally, and recently directed *The Light in the Piazza*. Wendy has been recipient of the Leon Rabin Award and 3 DFW Theater Critics Forum Awards. She teaches and coaches in her private voice studio, and in the popular Master Class series with James McQuillen. Sampling of TV/Film/Commercial: ‘Occupy, Texas,’ ‘Uptstream Color’ (selected as best Sci-Fi film of 2013), Baylor Hospital, JC Penney Christmas, Good Feet

Arch Supports and Blackmon Mooring. She is represented by the Mary Collins Agency, and is a proud member of Actor’s Equity.



Jacie Hood Wenzel

PETRA

A proud graduate of Texas Tech, Jacie is excited to be making her Theatre Three debut as Petra. Favorite DFW credits include: Chris in *Dancing at Lughnasa* (Contemporary Theatre of Dallas), Raffaella in *Grand Hotel* (Lyric Stage), Kathy in *Company* (ONSTAGE in Bedford) and Elizabeth in *Laundry @ Bourbon* (Runway Theatre). Upcoming Project: Madeline in the regional premiere of *Hit the Wall* at Watertower Theatre. When Jacie is not performing, you can find her at the Fort Worth Museum of Science and History as the Manager of Public Programs and Innovation Studios. She would like to thank Marianne and Scott for trusting her with this amazing opportunity. Much love to her husband, family, Frid, and Toki cat. #BestFriendsGang

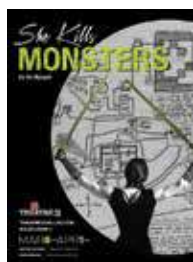


ANNOUNCING OUR
2017-18 SEASON

JEFFREY SCHMIDT / ARTISTIC DIRECTOR

MERRI BREWER / MANAGING DIRECTOR

SEASON TICKETS ON SALE NOW!



DO YOU WANT TO BECOME A SUBSCRIBER?
ORDER YOUR SEASON TICKETS TODAY
WITHOUT PAYING A PENNY!



**GET TICKETS
& MORE INFO**

214.871.3300 x1

THEATRE3DALLAS.COM

RESONANCE AND MEMORY: The Essence of Landscape

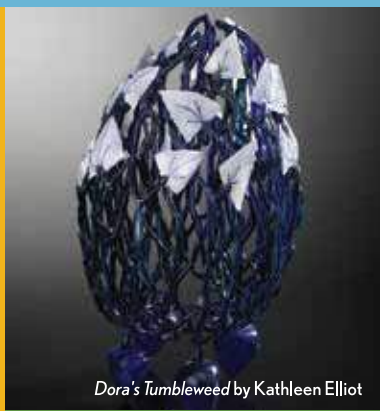
Through July 9 | Dupree Lobby

A group exhibition featuring eight artists who, through photography, drawings, paintings, and sculptures, explore the profoundly mysterious, elusive and imaginary qualities of the natural world and our relationship with it.

EXHIBITION **FREE**



Study by J.L. Paul



Dora's Tumbleweed by Kathleen Elliot



Downriver by Martin Weinstein

COMPLIMENTARY GALLERY TOURS

Thursdays @ 6:30 p.m.

Sundays @ 2:30 p.m.

IRVING
ARTS
CENTER

3333 N. MacArthur Blvd. Irving, TX, 75062 • Open 7 days a week
Free parking IrvingArtsCenter.com



Smithsonian Affiliate

You've seen him on stage...

but now he takes on his most important role...

Photo credits by Mike Morgan
& Michael Foster



YOUR Realtor.



MIKEY ABRAMS

I take **PRIDE** in being your Realtor.

Designated as a Certified Accredited Buyer Representative.

817-714-5959

MikeyAbramsRealtor@gmail.com

MikeyAbramsRealtor.com

WE'RE HERE FOR EVERY STAGE.

Frost is proud to support Theatre Three.
And we'd be proud to help you at all stages of your financial life too.

frostbank.com

Uptown Financial Center
2950 N Harwood, Suite 100
Dallas, TX 75201
(214) 515-4900

MEMBER FDIC





CELEBRATING 50 YEARS
of TRANSFORMING
LIVES THROUGH THE ARTS

TACA CELEBRATES THE TRANSFORMATIVE

IMPACT OF THE ARTS

FOR ALL CITIZENS OF DALLAS

2017 TACA GRANT AWARD RECIPIENTS

African American Repertory Theater • Arts District Chorale
AT&T Performing Arts Center • Avant Chamber Ballet • Big
Thought • Blue Candlelight Music Series • Bruce Wood Dance
Project • Cara Mia Theatre Company • Chamber Music
International • Chamberlain Ballet • Children's Chorus of
Greater Dallas • Cry Havoc Theater Company • Dallas Bach
Society • Dallas Black Dance Theatre • Dallas Chamber Music
Society • Dallas Chamber Symphony • Dallas Children's
Theater • Dallas Symphony Orchestra • Dallas Theater Center
Dallas Winds • Dark Circles Contemporary Dance • Echo
Theatre • Fine Arts Chamber Players • Greater Dallas Youth
Orchestra • Junior Players • Kitchen Dog Theater • Lone Star
Wind Orchestra • Lyric Stage • Nasher Sculpture Center
Orchestra of New Spain • Orpheus Chamber Singers • Plano
Civic Chorus • Plano Symphony Orchestra • Sammons
Center for the Arts • Second Thought Theatre • Shakespeare
Dallas • Soul Rep Theatre Company • Teatro Dallas • Texas
Ballet Theater • Texas Winds Musical Outreach • The Black
Academy of Arts and Letters • The Dallas Opera • Theatre
Three • TITAS • Turtle Creek Chorale • Undermain Theatre
Uptown Players • Voices of Change • WaterTower Theatre

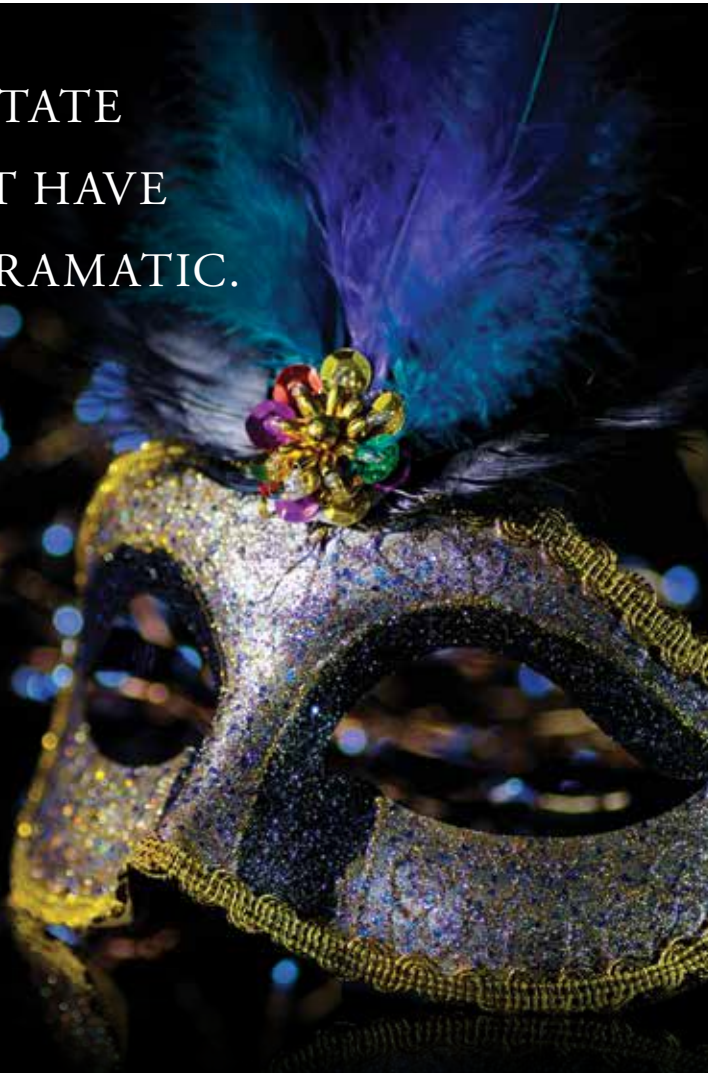
TACA believes in the transformative power of the arts and
their ability to ignite conversations that demonstrate respect,
offer exploration, examine personal challenges, celebrate
diversity, and tender hope, joy, understanding and laughter.

214.520.3930 taca-arts.org

Photo courtesy of TITAS



REAL ESTATE
DOESN'T HAVE
TO BE DRAMATIC.



DANA RIGG | 214.796.5509 | dana.rigg@cbdfw.com
Coldwell Banker Residential Brokerage
Preston Center – Global Luxury Office



GLOBAL
LUXURY.

Real estate agents affiliated with Coldwell Banker Residential Brokerage are independent contractor agents and are not employees of the Company. ©2017 Coldwell Banker Residential Brokerage. All Rights Reserved. Coldwell Banker Residential Brokerage fully supports the principles of the Fair Housing Act and the Equal Opportunity Act. Operated by a subsidiary of NRT LLC. Coldwell Banker, the Coldwell Banker logo, Coldwell Banker Global Luxury and the Coldwell Banker Global Luxury logo are service marks registered or pending registration owned by Coldwell Banker Real Estate LLC. 113507DFW_5/17

THE LEGACY FUND

Legacy Donors

\$75,000

The John & Bonnie Strauss Foundation

\$50,000

Janet Spencer Shaw

\$25,000

Dianne & Marion Brockett

David G. Luther, Jr.

\$10,000

The Eugene McDermott Foundation

Stan Graner & Jim McBride

Sally Hansen

Sarah M. Hansen

Ms. Elizabeth Rivera

\$1000 – \$9,999

Mr. Bill Bond

Mason Brown Family Foundation

Ms. Suzanne Burkhead

Meriam Calabria

George & Jo Ann Caruth

Kay Champagne

Dede Duson

Richard Ferguson

Elaina & Gary Gross

Craig A. Haynes

Mrs. Jo Kurth Jagoda

Ida Jane & Doug Bailey

Ms. Emily Jefferson

Wilson & Gwyn Mason

Tom & Phyllis McCasland

Ms. Elya Naxon

Dana Whitehead Rigg

Eileen & Harvey Rosenblum

Ken & Susan Swan Smith

Patricia A. Vaughn

Charlie & Laura Weems

Scott & Susan Williams

\$500 – \$999

Anonymous

Robert & Diane Alder

Andrea "Sid" Curtis

Gabe & Carol Dalla

Laura V. Estrada

Bobby & Anne Fincher

Richard & Rozelle Gilman

Fred J. Gross Memorial Charitable
Fund of the Dallas Jewish
Community Foundation

Gregory Hahn

Mary Anne Hardison

Barbara K. Materka

Sam & Barbara McKenney

Weathers Family Charitable

Fund of Communities

Foundation of Texas

Nina Works

\$250 – \$499

Michael & Christine Cluff

Michael L. Dailey

Chris Westfall &

Lisa-Gabrielle Greene

Linda M. Lee & Jay Isham

Judy & Jack Schecter

Gary & Genie Short

Walt & Gigi Steele

Van Pelt & Associates

Mr. Scott Tyler Williams

\$10 – \$249

Diana Behannese

Bill & Fran Carter

Katherine Church

Diana Clark

Mr. Raymond J. Clark

Mrs. Francis Estes

Robyn Flatt

Richard L. & Kay Fleming

Gregory Gerardi

Lane Gorman

Marilyn Halpin

Diane Haselroth

Cherry Haymes

Ms. Jean B. Hecht

Barry Herbert

Judy Hollis

Ms. Jane Hook

Eric Laub

Jack & Jo Ann Leavitt

Barbara Materka

Grace McDonald

Ms. Michelle Mew

Erika & Joel Nannis

Judy & George Nassif

Ellen Osburn

John & Julie Parolisi

Ms. Susan Read

Durel & Barbara Reid

Lynn Richardson

Ms. Ruth May Rydell

Mr. & Mrs. Gregory Shinn

Mr. Michael Skotnik

Jean & Neal Smith

Ete Szuts

Barbara Turner

Mrs. Helen C. Walker

Alan & Gloria Weinblatt

R.G. Zachariadis

THE *JAC ALDER* LEGACY FUND

Securing our future.



**THEATRE 3**
DALLAS

IMPACT

Visionary. Artist. Advocate. Mentor. Friend.

With his winning personality and that magnificent smile, Jac Alder reigned as a major force in the Dallas theatre scene. From the founding of his beloved Theatre Three in 1961 to his death in 2015, Jac worked tirelessly to establish Theatre Three as a respected member of the national theater landscape while discovering and attracting remarkable talent to North Texas. His theater-in-the-round welcomed works by young African-American playwrights August Wilson and Ossie Davis. It nurtured future Pulitzer Prize winners Beth Henley, Doug Wright and Tracey Letts. And, it introduced countless acclaimed actors, designers, and directors.

To honor this artistic giant and preserve his vision, Theatre Three's Board of Directors is pleased to announce the establishment **The Jac Alder Legacy Fund**. This fund will help secure the future of Theatre Three by funding capital needs and investing in key leadership. Theatre Three was Jac's life, and his life's work. **It will live on with your help!**



For more information please visit www.theatre3dallas.com
or call **Merri Brewer, Managing Director** 214-871-3300 x 103

□ T3 PATRONS • THE ANNUAL FUND

Theatre Three would like to acknowledge our donors who, through their contributions, made it possible for us to present 300+ performances in two spaces to the Dallas community. Your financial support is critical to helping us nurture our local artists and provide you with rich theatrical experiences. Should you wish to be added to this extraordinary list of donors or suggest corrections to our list, please contact our company manager, Kat Edwards, at (214) 871-3300 x117. THANK YOU!

THEATRE ANGELS \$10,000 and above

Mr. Jac Alder
Mrs. Janet Spencer Shaw

PRODUCER'S CIRCLE \$1000 - \$9,999

Ida Jane & Doug Bailey
Susan E. Barkley
Lawrence & Elizabeth Barron
Mr. James Lee Blackwell
Mr. Bill Bond
Dianne & Marion Broquette
Mason Brown Family Foundation
Laura Cash-Weems
Tim Chase & Eric Powell
Communities Foundation
Kathleen Cunningham &
Randy Willis
Dede Duson
Ms. Pauline Graivier in Memory
of Leonard Graivier M.D.
Stan Graner & Jim McBride
Elaina & Gary Gross
Fred S. & Jerri Grunewald
James & Gayle Halperin
Ms. Harriet Halsell
Ms. Sally Hansen
Ms. Emily Jefferson
Dr. Jere H. Mitchell
Nesha & George Morey
June S. Morgan
Harry S. Moss Foundation
Navias Family Foundation
Ellen Osborne
Wm W. Richardson
Enika Schulze
Jerry Setliff & Joyia Elinson
O. Darwin & Myra N. Smith
Fund of the Dallas Foundation
in Memory of Adina L. Smith
Victoria & Jack Tutterow

LEADING PLAYERS \$500 - \$999

David and Barbara Spark Baxter
Brig. Gen. & Mrs. H.. Dalton, Jr.
Steven & Shirley Danner
Claudia Davis
Virginia C. Dykes
Ms. Katherine Eberhardt
Bobby & Anne Fincher
Larry & Diane M Finstrom
David M. Forsythe
W. John Glancy
Mr. & Mrs. Craig Haynes
Henry & Mary Ellen Irving
Mr. Michael A. Jenkins
Chuck & Lolisa Laenger
William & Cynthia Meier
Wilson & Gwyn Mason
Maverick Capital Foundation
Joseph & Lucille Montag
David G. Luther, Jr.
Ms. Elya Naxon
Jan Nimmo In memory of
Dan Nimmo
Paul & Joan Ridley
Rick Russell
Richard Schulze
Steven Shaw
Mr. & Mrs. Kevin & Linda Spurrier
Sam Y. Dorfman, Jr. M.D.
Don & Norma Stone
Frank Sulzbach
Susan Swan Smith
Cenna Tucker
Dan Van Pelt
Weathers Family Charitable
Fund of CFT
Charlie & Laura Weems
Chris Westfall
& Lisa Gabrielle Greene

SUPPORTING PLAYERS

\$250 - \$499

Richard Baxter
John P. Bell, Jr.
Ralph & Jo Blackburn
Craig Boleman & Kass Prince
James D. Brown &
Jerry A. Knight
Ms. Suzanne Burkhead
Jay Champagne
Michael L. Dailey
Gabe & Carol Dallal
Ms. Ronnie Claire Edwards
James & Kathryn Erickson
Laura V. Estrada
Mary & Bob Fleming
Susan & Michael Fortin
Ms. Jane Gaines
Hal Systems Corporation
Larry & Christie Harrison
Mr. & Mrs. Jack W. Hawkins
Chris & Paul Hendricks
Christiane Hepfer
Charles & Trudy Hess
Louise W. Kahn
Endowment Fund
Betty & Tommy Keith
Rita M. Kliebert
Steve Krant
Ms. Judy Lawhorn
Maguire Oil Company
Ed Maier
Harry Malpass
Michael & Janine Mason
David & Wilma Milne
Judy & George Nassif
Mr. Patrick Parise
Joe & Mary Ring
Mary A. Ingram
Lorraine Sear
Jules & Hazel Schoenberg
Jim & Marilyn Schwartz
Gary & Genie Short
Todd & Debora Siddens
Texas Instruments Foundation
Hon. Carter Thompson &
Shirley Thompson

BACKSTAGE BENEFACTORS

\$125 - \$249

Mr. & Mrs. David Allred, III
Anonymous Donations
Charles & Janie Barnhardt
Rosanne Bell
James & Danna Bigner
Mr. & Mrs. Gregory K. Boydston
Mr. & Mrs. Robert Boyer
Tim & Susan Carnell
Bill & Fran Carter
Randy & Neva Cecil
Rita & Steve Clinton
Mavis S. Crim
Sid Curtis
Carol Jablonski & Michael Dill
Ms. Ruth McAlester Duff
Dana Edwards
John & Harryette Ehrhardt
Lee & Paula Eilbott
Tim & Patricia Elliot
Phil & Shannon Frink
Gary & Edith Fritzsche
Mike & Sandra Gist
Donald & Lynn Graham
Shirley Ann Grannan
Greg Hahn
Rita Harvey
Robert & Barbara Herbison
Mr. Jim Hines
Carol & George Kondos
Barbara F. Matherka
Hilda S. McLaughlin

K. Messerschmitt
Mike & Gayla Miller
Nancy & Joe Moore
S.D. Moore
Georgeann & King Moss II
Gary & Susan Oviatt
Bill Pervin & Susan Chizeck
Mary Petterberg
Larry & Carol Peters
Mr. Brett Powell
Dr. W. Paul Radman
Durel & Barbara Reid
Jules & Hazel Schoenberg
Patricia L. Shaughnessy
Mr. & Mrs. Chris & Jayne Sparrer
Pat Stodghill
Dr. Joan M. Tamez
Texas Star Arts Council
Robert & Lynne Thompson
Barbara S. Turner
James F. & Barbara Wallis
Ralph O. Weber
Mr. Richard Willis
Paul & Allison Wright

FRIENDS

\$50 - \$124

Marilyn and David Adler
Philanthropic Fund of the
Dallas Jewish Community
Foundation
Mr. & Mrs. David Alfred, III
Kim Altmeyer
Roberto Andersom
Anonymous
Amy Applebaum
Charles & Susan Arnett
Mr. Greg G. Atkins
Ms. Janet Aune
Mr. Curtis Bagley
Steve & Mary Baker
Alice Baltierra
Ms. Bettye C. Barnes
Preston Baron
Dr. & Mrs. Steven A. Bell
Carl & Jeanette Benson
Vern Berry
Ms. Taunee S. Besson
John & Betty Birkner
Julie Blackwell
Ms. Linda Blase
Frances Blatt
Bnsf Railway Foundation
Dr. Jo Ellen Bogert
Mr. Bill Bond
Janine W. Brand
Ms. Merril Brewer
Diana Briner
Wayne & Tonna Brock
Robert & Patricia C Brooks
Pat & Nora Burns
Ted & Carol Bywaters
Mr. Bradley M. Campbell
H.E. & Carol Canada
Stan Carpenter
Yvette Carter
Nick Castanon
Martha Ann Cates
Mary Cave
Mark Chambless
Doris Cheshire
Kim Cheshire
John Cissne
Mr. Raymond J. Clark
Mr. B.J. Cleveland
Mr. & Mrs. Cleveland Clinton
Michael & Christine Cluff
Sam & Judy Coats
Sherri Colby
Mr. Bruce R. Coleman
Lee Ann Collins
Sumico Colombo
Martin & Michelle Conroy
George & Gayle Cowart
Betty & Tom Cox

Julie Crawford
Jan Gartenberg & Don Alan Croll
Jennifer Cross
Mr. & Mrs. John Cross
William & Juaniza Cross
Carol L. Croy
Mr. Dustin Curry
Andrea Curtis
James Curtis
Brig. Gen & Mrs. H.J. Dalton, Jr.
Mr. John S. Davies
Annette Davis
Ron & Cynthia Devies
Carol Dirks
Ms. Janet A. Domaracki
John R. Donaldson
Allan & Rhonda DUBY
Ms. Audrey Duffell
Jo Anne Reagan Duncan
Ms. Shirley Dyess
Ms. Kat Edwards
David & Maureen Ehrlicher
Mr. R. Bruce Elliot
Lee & Paula Elliot
Ms. April Ellis
Exxonmobil Foundation
Mr. & Mrs. Ross Farnsworth
Boyce & Pat Farrar
Hugh Feagin
Dorothy E. Fischer
Mr. Andrew Fleming
Richard L. & Kay Fleming
Greg Forshay
In Memory of Alpha A. Fowler
Chris & Lisa Fox
Ms. Suzanna Fox
Ms. Christine Franklin
Kurt & Donna Freed
Sharon & Mark Fritz
Matt & Amy Galley
Ms. Marianne Galloway
Catalina Garcia & Rollin F. Gary
Ms. Carol Ann Geckler
Pat Gentry
Doug & Linda Gilpin
Nancy Goble
Eileen Goldstein
Harvey Gollman
Ms. Gloria Gonzalez
Ms. Sharon C. Graef-Browning
Philip & Gloria Gray
Jack & Lana Greeley
In Honor of Jac Alder and
in Memory of Norma Young
Mr. Fred Grinnell
Mr. Mark C. Guerra
Mrs. Tambyr Haagen
Bob & Janet Hadelier
Eric Stuart Hagen
Greg & Heda Hahn
Mark & Lynda Hamilton
Gerald & Francis Hare
Mike Harris
Lois Sonnier Hart and Bill Hart
Gregory Hawthorne
David & Cherry Haymes
John & Sandi Hebley
Ms. Jean B. Hecht
Reva Knight Henderson
Morley & Cheryl Herbert
Susan Herbert
Lori Herbst
Ms. Charlotte Herr
Messrs. Doug Miller & Bob Hess
Dr. Pamela R. Hill
James P. Holcomb
Gloria Holland
Charles & Julie Holman
John & Beverly E. Houston
Mr. & Mrs. Ed Howard
R. Neil & Joan Hutson
Mr. Kyle Igneczi
Terri Elbert Igneczi
Mr. Kris H. Ikejiri
Rusty & Gayle Ingle
Mr. & Mrs. Douglas L. Jackson, Jr.

Mr. Mark Jacobs
 Mr. & Mrs. John Jagers
 The James'
 Howard & Marla Janco
 Sue & Phil John
 Iris Johnson
 Melinda Johnson
 Mr. Parris Jones
 Ms. Carolyn Kacena
 Martin J. & Bonnie Kahn
 Nancy Kaiserman
 Mr. & Mrs. A. R. Kampschafer
 Ms. Ellen Kaner
 Bruno Cat & Bruno Dog
 Michael & Suzanne Kay
 Betty E. Kelly
 Charlotte Kelly
 Gail G. Klaveness
 Rita M. Kliebert
 Elaine Klobe
 Mr. Jerry Knight
 Marianne Kolar
 Carol & George Kondos
 Caryn Korshin
 Wendy Koster
 Anna Kuznetsova
 Lee & Kim Laird
 Ms. Kelly K. Lane
 John H. & Pam Lange Jr.
 Dr. & Mr. Ricky Lark
 Jack & Jo Ann Leavitt
 Nicole LeBlanc
 Robin Lederer
 Jeannine & Steve Lee
 Linda C. Lee
 Mrs. M. Denise Lee
 Lois Leftwich
 Mr. Alan H. Levi
 Patty Lewis
 Linda M. Lee & Jay Isham
 Diane Litke
 Ms. Ruth Lockhart
 Carol Braden & Vera Locurto
 Kathleen A. Love
 Mr. Matt Love
 Jim & Peggy Lubniewski
 Carol Ann & Dan Luby
 Gregory & Maryam Lush
 Ada Lynn in Memory of
 Sidney Lynn

Ms. Sue Magness
 Mr. Marvin Malm
 Mrs. Jane Malone
 Kay King Martin
 Betsy Matheson
 Rev. & Mrs. William Matthews
 Katie & Michael McCray
 Ms. Frances McGlinn
 Cecilia McKay
 Ricardo McKay
 Sam & Barbara McKenney
 Mr. Larry McKinney
 Ms. Shirley McLean
 Paul & Claire McLin
 Mr. Michael McMillan
 Lynn Meyerson
 Dusty Miles
 Leon Miller
 Ms. Tracie Miller
 Nancy & Joe Moore
 Kip & Delinda Kipton Moravec
 Sharron Morgan
 & Stephen Flach
 Nan Moser
 Diana Muckleroy
 Ms. Jane R. Myers
 Erika & Joel Nannis
 Ron & Nancy Nattins
 Liz Naughton
 Greg & Debbie Nieman
 Mr. Thomas J. O'Keefe
 Ms. Cathy O'Neal
 Margaret Olsson
 Ellen Osburn
 Lori Palmgren
 Paige Parker
 Ms. Linda Patston
 Ms. Carlene Peal-Sconce
 B. J. Pendegrass
 Dr. Frank Perez
 Mary Petterborg
 Russell & Murphy Phillips
 Ms. Dana Lynne Pickard
 Andrews Cope &
 Danielle Pikard Cope
 Mrs. Janine Pitts
 Chrystin Pleasants
 Ms. Cynthia Powell
 Nancy Prowse
 David Pryor

QuickSilver Interactive Group
 Chris Rajczi
 Charles & Susan Ramirez
 Mr. Jeff Rane
 Kathleen Rastegar
 Dr. & Mrs. Peter C. Ray
 Bonnie Rea
 Mr. & Mrs. Richard A. Reed
 Dr. Manfred Reinecke
 Catherine Rich
 Lynne Richardson
 David W. Ricker
 Sam & Sharon Ricks
 Dr. & Mrs. A. D. Roberts
 Lo & Karen Robinson
 Meg Robinson
 Eileen & Harvey Rosenblum
 Mrs. Patricia Rowen
 Nancy & Ron Rubin
 Mr. & Mrs. Warren L. Rubin
 Ken & Phyllis Rueckert
 Paul & Stephanie Rula
 Doug & Kerrin L. Rummel
 Lisa Ryan
 Ms. Ruth May Rydell
 Jay & Jessie Sackler
 Mr. Glenn Samford
 Ellen Samuels
 Melanie Lynn Sanders
 Ms. Jad Saxton
 Judy & Jack Schecter
 Hal & Mary Jo Schneider
 Ms. Deborah Schwartz
 Mr. Bill Sehnert
 Brooks & Vicki Shafer
 Mr. & Mrs. Gregory Shinn
 Bill & Brenda Sims
 Jan Sims
 Robert Sloan Advised Fund
 of the Dallas Foundation
 Beth Sparks
 Nancy Spence
 Russell & Laura Spencer
 Claire Stanard
 Jay Stankiewicz & Don Groves
 Mr. Matthew Stepan
 Carolyn & Gene Stern
 Marge Stockton
 Ms. Jean Stoner

James F. Strunc & Mary Anne
 Gentry-Strunc
 Peggy Sullivan
 Adrienne Svidlov
 Lori Swarner
 Shelly Swendig
 Anne Tabb
 Daniel T. Tamez
 Mr. & Mrs. Bruce Taylor
 Kim Titus
 Mr. & Mrs. David Townsend
 Ms. Nancy Tuffin
 Mr. & Mrs. Tom Tunks
 Leland Turner
 Mr. Jeffrey Underwood
 Ms. Linda Harris &
 Marty Van Kleeck
 Thomas E. & Charlotte Walker
 David Walsh
 Fred & Susan Warner
 Hal & Carolyn Warnick
 Floyd & Nancy H Watson
 Ann Weaver
 Dr. Cynthia Webb &
 Mr. Keith Webb
 Dr. Camille Kempke
 & Roy Weidig
 Ms. Lucia Welch
 Paula A. Welch
 Amanda & Michael West
 Mr. Dale A. Wheeler
 Dana Whitehead Rigg
 J. Kenneth & Alayne Wilemon
 Kathy Williams-Hunter
 Mr. Scott T. Williams
 Jane Willingham
 Ellen Wilson M.D.
 Ed & Ylva Wolfgang
 Gwen Wood
 Rob Wooters
 Ken & Anita Wrobel
 Mr. R. C. Zachariadis
 Anne Zhang
 Z. & Shirley Zsohar

IN KIND DONORS
 Chris Gomersall
 SoloShoe Communications
 Up to date as of 2/22/17

ENROLL IN SUMMER CAMP!

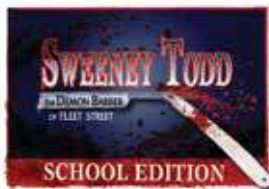
MUSICAL THEATRE ACADEMY at THEATRE & 3

3 WEEK MONDAY THROUGH FRIDAY CAMP



June 5-25

KIDS! ages 5 to 12



July 11-30

TEENS! ages 13 to 19

Class size is limited

SIGN UP TODAY!

MORE INFO

214.871.3300

theatre3dallas.com

214.522.9911
DRDELPHINIUM.COM



the fine art of
FLOWERS



DR DELPHINIUM
DESIGNS+EVENTS